



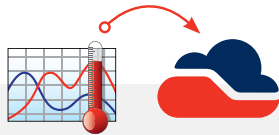
MadgeTech Cloud Services

MadgeTech Cloud Services

————— Manual —————

Thank you for choosing MadgeTech for all of your data logging needs.

Compact, accurate and affordable, MadgeTech data loggers can measure and record data for a variety of parameters. Now, with the addition of MadgeTech Cloud Services, monitoring data from around the world is easier than ever. With MadgeTech Cloud Services, a wireless data logging system can securely transmit real-time data to be viewed on any internet or data enabled device such as a computer, tablet or mobile device.



Setting Up MadgeTech Cloud Services with the MadgeTech 4 Software

Page 3-4



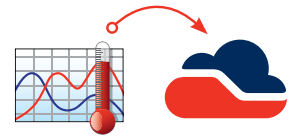
Setting Up MadgeTech Cloud Services with the RFC1000 Cloud Relay

Page 5-6

Table of Contents

Introduction	3
Setting up MadgeTech Cloud Services with the MadgeTech 4 Software	3-4
Setting up MadgeTech Cloud Services with the RFC1000 Cloud Relay	5-6
MadgeTech Cloud Services Overview	9
Main Navigation	7
Summary	8
Downloading / Deleting Data.....	8
Bulk Data Download	8
Manage Relays.....	9
Logger Settings Screen	9
Manage Alerts.....	10
Assigning Alerts to Data Loggers	10
Preferences Screen	11
My Account Screen	11
Email Support.....	11
Logout.....	11
Cloud FAQ's	12
Contact Information.....	13
About MadgeTech, Inc.	13

Setting up MadgeTech Cloud Services with the MadgeTech 4 Software



MadgeTech Cloud Services can be used with the PC-based MadgeTech 4 Software with no additional equipment required. Data is sent from the MadgeTech 4 Software to your MadgeTech Cloud Services account, where data can be viewed on any internet enabled device.

System Requirements

- MadgeTech wireless data logger(s). Data loggers must be running in real-time recording mode
- MadgeTech RFC1000 wireless transceiver
- MadgeTech Cloud Services account
- A PC with internet access, running the latest version of the MadgeTech Software

Supported Web Browsers

- Apple Safari
- Mozilla Firefox
- Google Chrome
- Incognito or Private browser tabs are not supported

Getting Started

Creating a MadgeTech Cloud Services Account

1. Go to cloud.madgetech.com.
2. Click **Create an Account**.
3. Fill out all of the required fields and click **Sign Up!** to create a free account.
4. Email notification will be sent. Click the **verify your account** link to complete setup.

Logging into the MadgeTech Cloud Services

Logging into the MadgeTech Cloud Services in the MadgeTech 4 Software

1. Open the MadgeTech 4 Software.
2. Click the **File** tab, and then click the **Options** button located at the bottom of the menu.
3. Click the **Cloud** tab located on the left sidebar.
4. Sign in using the the MadgeTech Cloud Services account email and password and click **Log in**.



Logging into MadgeTech Cloud Service via web browser

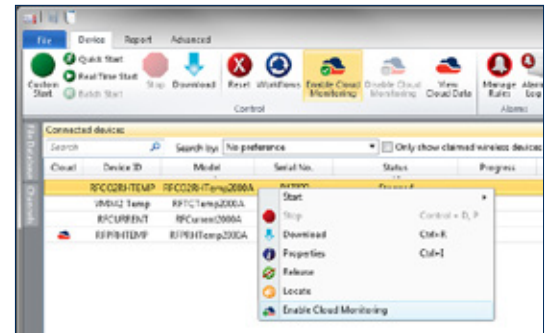
1. Go to cloud.madgetech.com.
2. Login using the MadgeTech Cloud Services account email and password.
3. Once logged in, the browser will display the summary of loggers. If there are loggers connected, they will display as either **Active**, **Stopped** or **Disconnected**.

Enabling/Disabling Data Loggers within the MadgeTech 4 Software

MadgeTech wireless data loggers must be enabled to send data to the cloud.

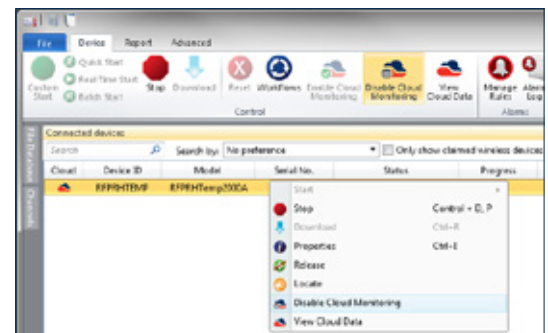
Enabling a data logger for MadgeTech Cloud Services

1. In the MadgeTech 4 Software, select the data logger to connect to the MadgeTech Cloud. Multiple devices can be selected, by holding the **CTRL** or **Shift** key and either selecting additional devices or pressing the arrow keys.
2. On the **Device** tab, in the **Control** group, click **Enable Cloud Monitoring**. Users can also right-click on the device and select **Enable Cloud Monitoring** in the context menu.
3. In the **Connected Devices** panel, there is a Cloud column. If the Cloud column is not visible, right click on any of the other columns and a drop down menu will appear with other column options. Make sure the Cloud option is selected and a checkmark is visible.
4. If a data logger is cloud enabled and is running in real-time, the Cloud icon will be colored. If the data logger is cloud enabled but stopped or not running in real-time, the cloud icon will appear grey. If the data logger is not connected to the cloud at all, there will be no icon in the Cloud column.



Disabling a data logger from MadgeTech Cloud Services

1. In the MadgeTech 4 Software, select a Cloud enabled data logger. Multiple devices can be selected, by holding the **CTRL** or **Shift** key and either selecting additional devices or pressing the arrow keys.
2. On the **Device** tab, in the **Control** group, click **Disable Cloud Monitoring**. Users can also right-click on the device and select **Disable Cloud Monitoring** in the context menu.
3. In the **Connected Devices** panel, once the data logger is disabled from the cloud, the cloud icon in the cloud column will disappear.



Viewing Cloud Data

There are two options for viewing and monitoring cloud data

1. From a mobile device, scan the QR code in the **Cloud Options** menu within the MadgeTech 4 Software.
2. In the MadgeTech 4 Software, on the **Device** tab, in the **Control** group, click **View Cloud Data**. Users can also right-click on a cloud enabled device and select **View Cloud Data** in the context menu. This will display the cloud data in a web browser on the local PC.

Setting up MadgeTech Cloud Services with the RFC1000 Cloud Relay



The RFC1000 Cloud Relay allows data from MadgeTech wireless loggers to be sent directly to a MadgeTech Cloud Services account, eliminating the need for a central PC and MadgeTech 4 Software. With the RFC1000 Cloud Relay, real-time data can easily be transmitted to the MadgeTech Cloud, where it can be viewed from any internet enabled device.

System Requirements

- MadgeTech wireless data logger(s). Data loggers must be running in real-time recording mode
- MadgeTech RFC1000 Cloud Relay
- MadgeTech Cloud Services account
- Ethernet jack for internet access
- Electrical outlet

Supported Web Browsers

- Apple Safari
- Mozilla Firefox
- Google Chrome
- Incognito or Private browser tabs are not supported

Getting Started

Creating a MadgeTech Cloud Services Account

1. Navigate to cloud.madgetech.com.
2. Click **Create an Account**.
3. Fill out all of the required fields and click **Sign Up!**
4. You will receive an email notification. Click the **verify your account** link to complete setup.

Logging into MadgeTech Cloud Services

1. Navigate to cloud.madgetech.com from any web browser listed above.
2. Login using your account email and password.
3. Once logged in, the browser will display the summary of loggers.



Adding Devices to MadgeTech Cloud Services

Claiming an RFC1000 Cloud Relay

1. Go to the menu and select **Manage Relays**.
2. Click the **Claim a Relay** button.
3. Insert the RFC1000 Cloud Relay Serial Number and Claim Key, located on the side label on the device enclosure.
4. It may take 1-2 minutes for the RFC1000 Cloud Relay to sync to the MadgeTech Cloud Services account.
5. Once synced, the device will be shown in the **My Relays** list.

Claiming a Data Logger

1. Verify that the data loggers are in wireless transmission mode.
2. Within MadgeTech Cloud Services account, go to the menu and select **Manage Relays**.
3. Select an RFC1000 Cloud Relay listed under **My Relays**.
4. Any MadgeTech wireless data loggers on the same network and within range will be listed under **Unclaimed Loggers**.
5. Click the **Claim** button next to the data loggers you would like to claim.
6. It may take 1-2 minutes for the wireless data logger to sync.
7. Once synced, the data logger will appear under **Loggers Claimed by this Relay**.

Starting and Stopping a Data Logger

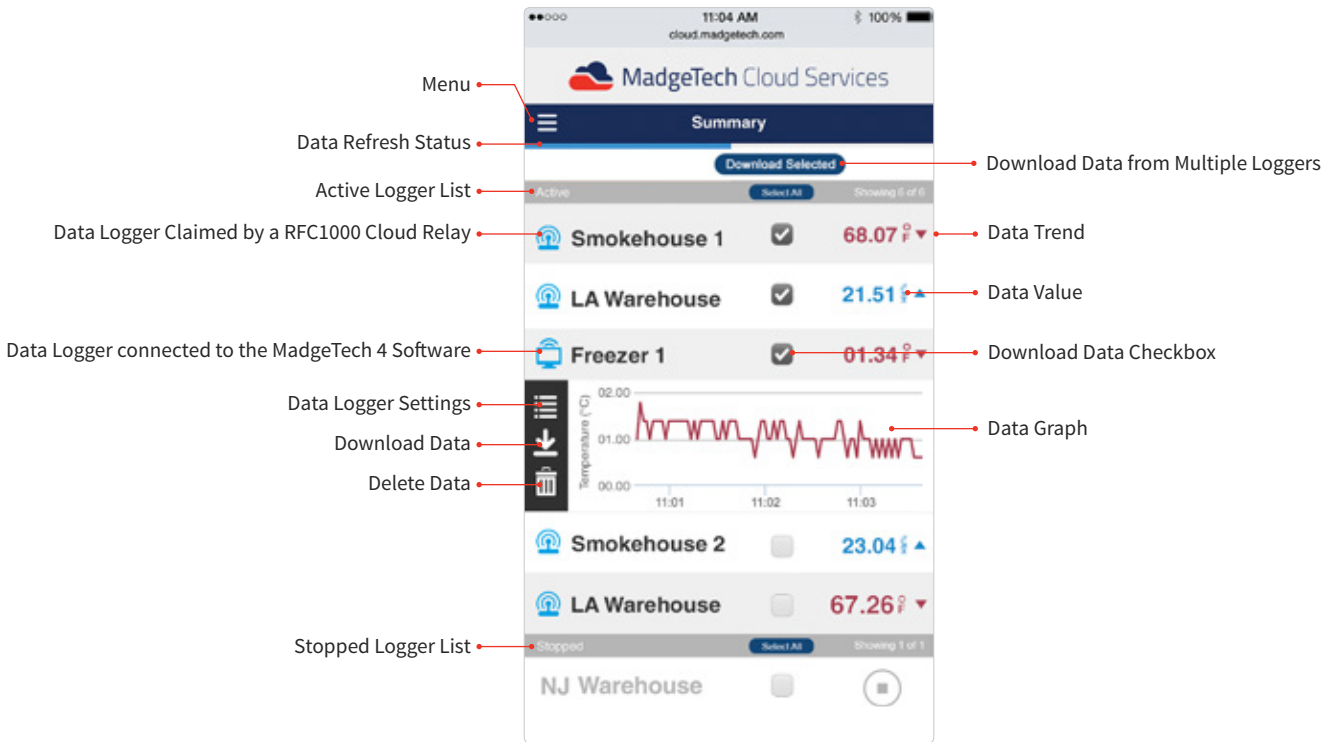
Starting a Data Logger

1. From the main menu, select **Logger Settings**.
2. Within the **Logger Settings** screen, click on a data logger you would like to start.
3. Within the **Status** row, click the **Start** button.
4. It may take 1-2 minutes for the data logger to sync to the MadgeTech Cloud Services account.
5. Once synced, the data logger will start recording.

Stopping a Data Logger

1. From the main menu, select **Logger Settings**.
2. Within the **Logger Settings** screen, click on a data logger you would like to stop.
3. Within the **Status** row, click the **Stop** button.
4. It may take 1-2 minutes for the data logger to sync to the MadgeTech Cloud Services account.

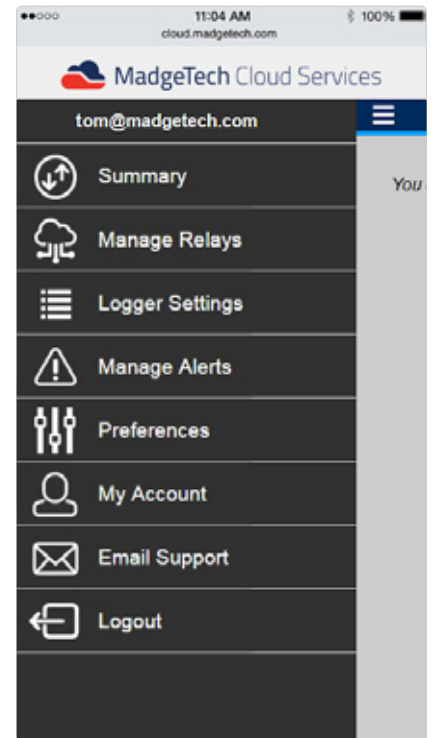
MadgeTech Cloud Services Overview



Main Navigation

The main navigational menu can be accessed by selecting the icon located at the top left of the screen, next to the **Summary** header.

- **Summary:** The home page of the MadgeTech Cloud Services account. It will show **Active**, **Stopped** and **Disconnected** data loggers.
- **Manage Relays:** Claim or release an RFC1000 Cloud Relay
- **Logger Settings:** The page will show **Active** or **Inactive** data loggers. Users can choose to show or hide the loggers on the cloud and information about the loggers can be displayed here including the **Model**, **Serial Number**, **Cloud ID**, **Device ID**, **Status** and **Display Options**.
- **Manage Alerts:** Create and manage alert rules.
- **Preferences:** Users can select unit preferences and the time format.
- **My Account:** User account information.
- **Email Support:** Users can click this button to launch the default email carrier and contact MadgeTech Support.
- **Logout:** This will log the user out of the MadgeTech Cloud Services account on the device being used.



Summary

Active Data Loggers

On the Summary screen, in the **Active** section, data loggers that are currently recording in real-time will appear here.

- Display a graph by clicks on the Device Name or ID.
- For loggers with more than one channel, users can shuffle through the parameters by clicking on the current reading value.
- Click on the displayed graph to enhance to a larger view.

Stopped Data Loggers

Data loggers that are currently running in any mode other than real-time, or are stopped but still cloud enabled, will appear as Stopped on the Summary screen.

Disconnected Data Loggers

In the **Disconnected** section of the Summary screen, data loggers that are enabled with the account but are not online will appear as disconnected.



Downloading / Deleting Data

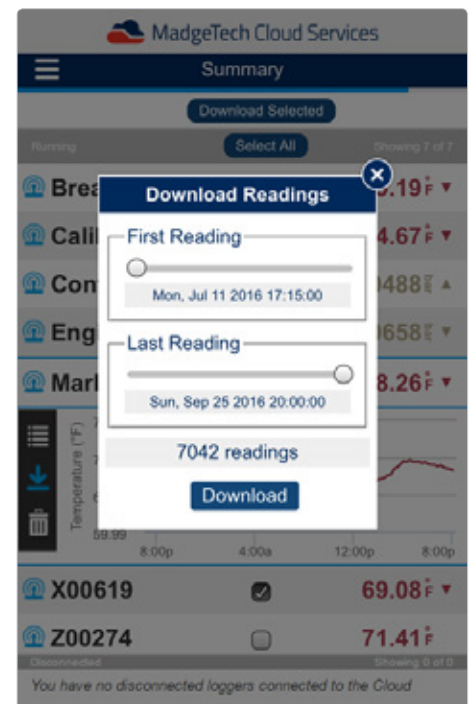
Clicking on a data logger within the Summary screen will provide the user with a real-time graph view of the data. To the right of the graph, there are three additional options:

- **Logger Settings:** View and manage claimed data loggers
- **Download Data:** Download data as .xls file
- **Delete Data:** Delete recorded data

Bulk Data Download

Users are able to bulk download data from multiple data loggers.

- **Checkboxes:** Use the checkboxes to select multiple data loggers
- **Select All:** Selects all enabled data loggers
- **Download Selected:** Download data as .xls file



Manage Relays

The **Manage Relays** section allows users to add and manage RFC1000 Cloud Relays.

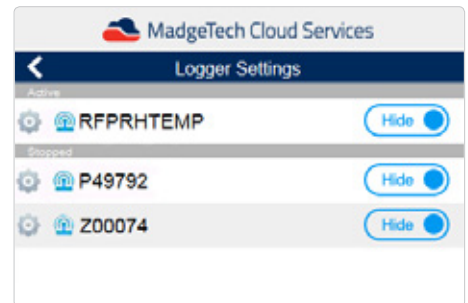
- **Claim a Relay:** Add a new RFC1000 Cloud Relay to your account.
- **Gear Icon:** Manage RFC1000 Cloud Relays
 - Rename the Relay
 - Release the Relay
 - Claim loggers to the Relay
 - Release a logger claimed by the Relay



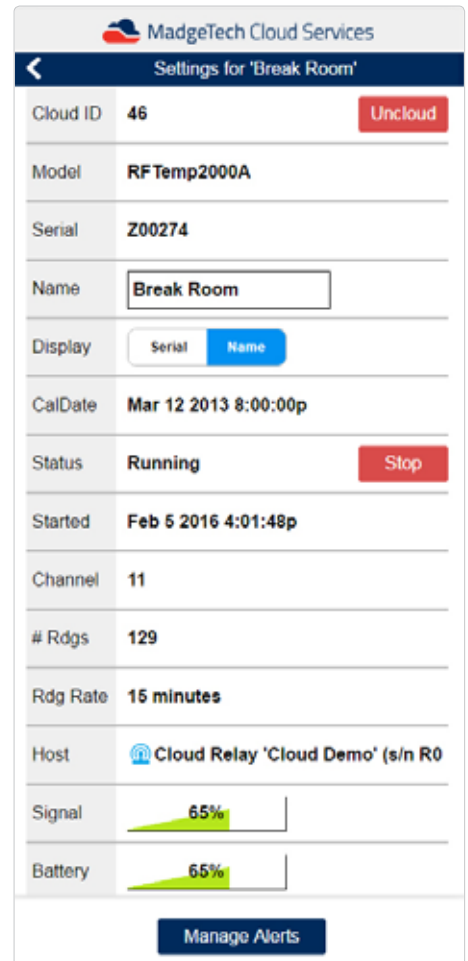
Logger Settings Screen

The **Logger Settings** section allows the user to toggle the visibility of connected data loggers by clicking the Hide or Show button on the right side. This will change how the loggers are displayed on the Summary screen.

Clicking the gear icon to the left of the logger will show detailed information about that logger:



- **Cloud ID:** Cloud ID number for that data logger
- **Model:** The type of logger
- **Serial:** The physical device serial number
- **Name:** Displays the name of the device
- **Display:** Toggle between Device ID or Serial number, to modify the display in the Summary screen
- **Device ID:** The user editable Device ID that can be changed in the MadgeTech 4 Software
- **Status:** This will indicate if the logger is running, stopped, or disconnected
- **Started:** When the device was started
- **Channel:** Indicates the wireless channel the device is set on
- **# Rdg:** Indicates the number of recorded readings.
- **Rdg Rate:** Indicates the reading rate the device is recording at. *(only present with the use of the RFC1000 Cloud Relay)*
- **Host:** Indicates what device the data logger is connected to.
- **Signal:** Indicates the signal strength *(only present with the use of the RFC1000 Cloud Relay)*
- **Battery:** Indicates the battery life of the data logger *(only present with the use of the RFC1000 Cloud Relay)*
- **Manage Alerts:** Add or manage alert notifications for the data logger.



Manage Alerts

Alert Rule

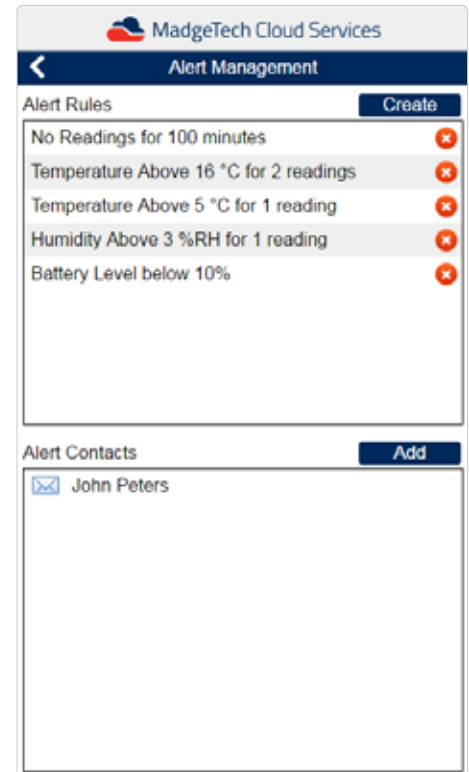
Text and email notifications can be configured when specified threshold limits have been met. To add an alert:

- Within in the Navigation, go to **Manage Alerts**.
- Click **Create**.
- The Create New Alert Rule dialog box will popup prompting the user to select from the following:
 - **No Readings**
 - **Channel Threshold**
 - **Battery Level**
- Fill out the appropriate fields and select **Create** to save your alert.

Alert Contacts

Text and email alert notifications can be sent to one or multiple contacts. To add a contact:

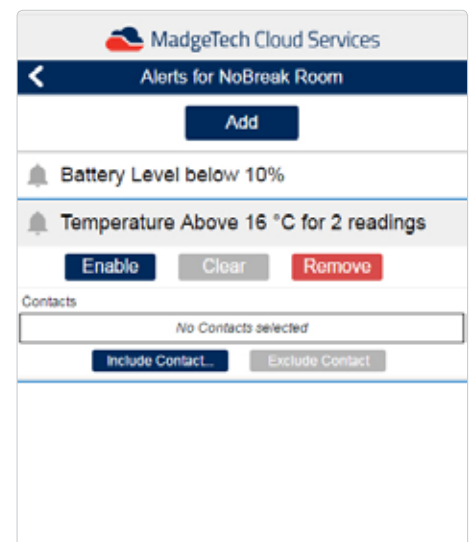
- Click the **Add** button next to Alert Contacts.
- Fill out the fields.
 - **Name:** Fill in the name of the contact
 - **Method:** Select from a SMS (text) or email notification
 - **Address:** Fill in the email or phone number
- Select **Create** to save your contacts.



Assigning Alerts to Data Loggers

Once Alert Rules have been created, you may then assign these alerts to claimed data loggers.

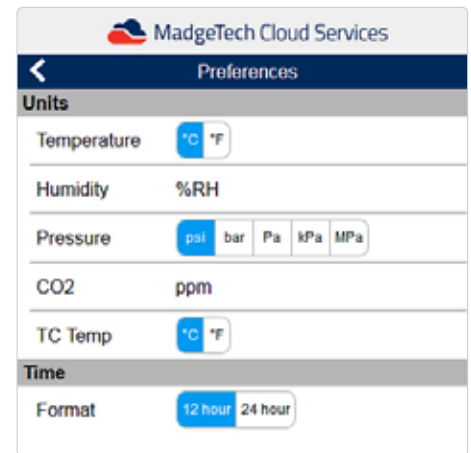
- Select the data logger and click the gear icon to view the settings.
- Click the **Manager Alerts** button.
- Click the **Add** button.
- Select an Alarm Rule within the list.



Preferences Screen

The **Preferences** section allows the user to change the display units for each compatible parameter and the time format. The time format can either be a 12 hour or 24 hour clock.

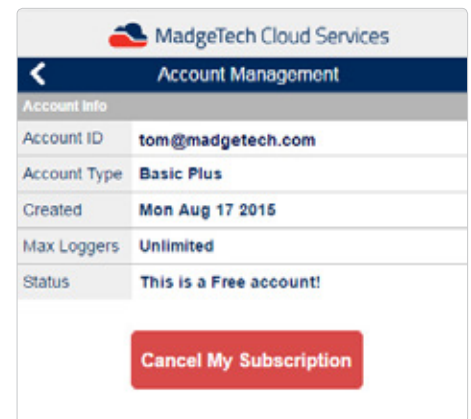
Note: The time displayed is based upon the remote user's location, not the location of the data logger.



My Account Screen

The **Account Management** screen displays account information.

- **Account ID:** Shows the user email associated with the account.
- **Account Type:** Shows the account plan currently sign up for.
- **Created:** Shows the start date of the account.
- **Max Loggers:** Shows the maximum number of devices the account can claim.
- **Status:** Shows the payment status of the account.



Email Support

The Email Support button will allow the user to contact MadgeTech for any support or technical questions. This will launch the default email carrier.

Logout

The Logout button will log the user out of the Cloud on the current device.

Cloud FAQ's

Can I log into my basic cloud account on more than one device?

Yes, a single basic cloud account can log into multiple devices (*ie; mobile phone, tablet, laptop*).

Can other people use my login?

Each basic cloud account is tied to a unique email address for one user to remotely view data. As with any membership or service, sharing login information exposes personal information and/or access to preference settings. Sharing login credentials is not prohibited but is not recommended either.

Why is my data not showing up in the cloud interface?

If you are unable to view data, confirm that the logger has been successfully enabled for cloud monitoring and is actively logging in real-time.

I am monitoring data loggers in a different time zone. Which time zone is the cloud displaying?

Cloud data is displayed on remote devices with the recipient's local time zone.

I started my device in real-time, shut down my computer, and now the cloud is saying the data logger is disconnected. Why can I not see my data?

If a logger was configured for cloud viewing using MadgeTech 4 Data Logging Software, the software must be up and running on the central PC in order to transmit data to the MadgeTech Cloud.

My reading rate is set to 15 seconds. Why is my cloud data not refreshing that fast?

MadgeTech Cloud Services is set to refresh every 60 seconds. However, expanding the graph will display each reading taken at the user selected reading rate.

I am recording with a multi-parameter device. How do I view the other parameters?

Clicking on the current reading will scroll through the various parameters being recorded.

I want to view my data in Fahrenheit, not Celsius. Can I change this?

Yes. Users can customize display units on the Preferences page.

How do I cancel my account?

At the bottom of the Account Management page, there is a Cancel My Subscription button that will allow the deactivation of your account.

I cancelled my account but want to use it again. Do I have to sign up again?

No, deactivating your account will still allow you to sign in and access the Account Management page, where you can reactivate your account.

Contact Information

For further information on the MadgeTech Cloud Services, please contact us:

Sales & General Inquiries: (603)456-2011

Toll Free: (877) 671-2885

General Information: info@madgetech.com

Sales: sales@madgetech.com

Customer Support: support@madgetech.com

www.madgetech.com

About MadgeTech, Inc.

MadgeTech, Inc. is a global company based in New England and founded on old-fashioned principles, customer service, quality and trust. MadgeTech's President, Norman Carlson, started the company in 1996 and charted the growth of the product lines and services while maintaining those solid core principles.

Our can-do team of engineers and technical staff consistently incorporate new and innovative ideas into our data loggers. In short, we push the envelope, raising the bar in innovation and quality. Our competitors have praised us by adopting many of our ideas as their own. Over time, MadgeTech has become the industry standard in the data logger market.

MadgeTech continuously develops new, cutting-edge products, creating solutions for our customers around the world in industries across the board. Our growing network of distributors has expanded our presence to markets far beyond our home headquarters in New Hampshire; our products are now sold in over 70 countries around the world.

Our employees are committed to quality and customer satisfaction. Behind the full range of MadgeTech's products and services is the cumulative expertise of experienced engineers, manufacturing and electronic professionals and technicians. Our knowledgeable sales team can offer technical advice to assist in selecting the right product for each application, as well as providing after-sales support.

MadgeTech is dedicated to providing customers with reliable, affordable products, hassle-free ordering and excellent service, saving customers time and money. It is our goal to earn your trust in meeting your needs and providing innovative solutions. The products and services that bear the MadgeTech name come with quality assurance and the best support in the industry today.



WessexPower

Solutions for High-tech Instrumentation

www.wessexpower.co.uk

 **LS Technology**[®]

 E-commerce Instrumentation

www.loggershop.co.uk

Telephone: +44 (0) 1929 459 459 | Email: Sales@WPLS.co.uk



MadgeTech, Inc
6 Warner Road, Warner, NH 03278
T: (603) 456-2011 F: (603) 456-2012
info@madgetech.com
www.madgetech.com