

WIRELESS

Data Logger Monitoring System



MadgeTech Wireless Monitoring System

The MadgeTech system accommodates a wide variety of industries and applications, and offers real-time, continuous monitoring, and configurable alarm notifications.

- Quick & Easy Setup
- Text & Email Notifications
- Free Lifetime Support
- Unlimited Scalability

Table of Contents

1. Wireless Systems

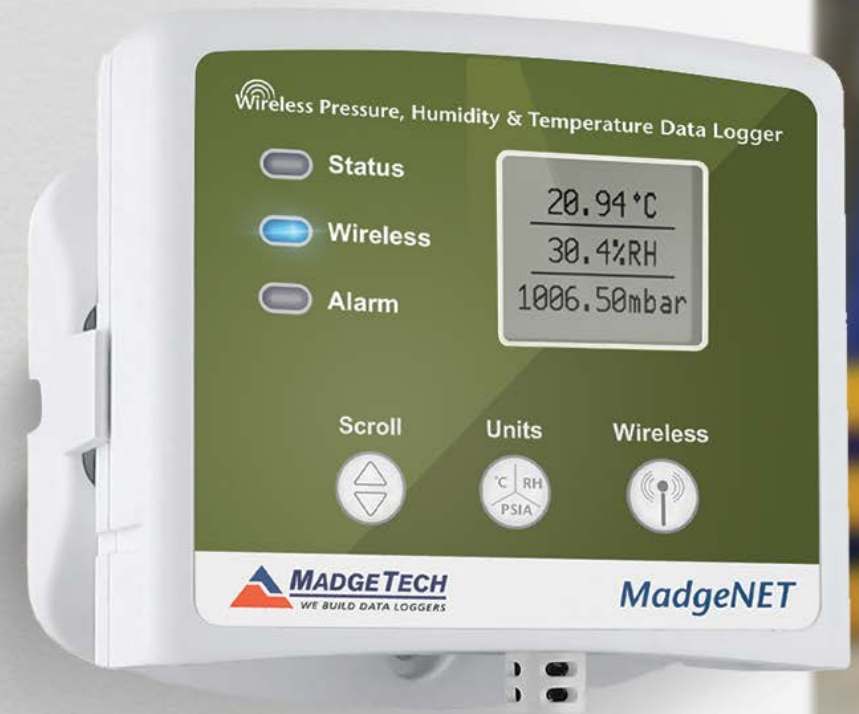
- Components
- Overview
- Setup

2. Products

- Wireless Data Loggers
- Wireless Transceivers

3. MadgeTech Software

- MadgeTech 4 Data Logger Software
- MadgeTech Cloud Services



Wireless System Components

BUILDING YOUR DATA LOGGING SYSTEM



DATA LOGGER



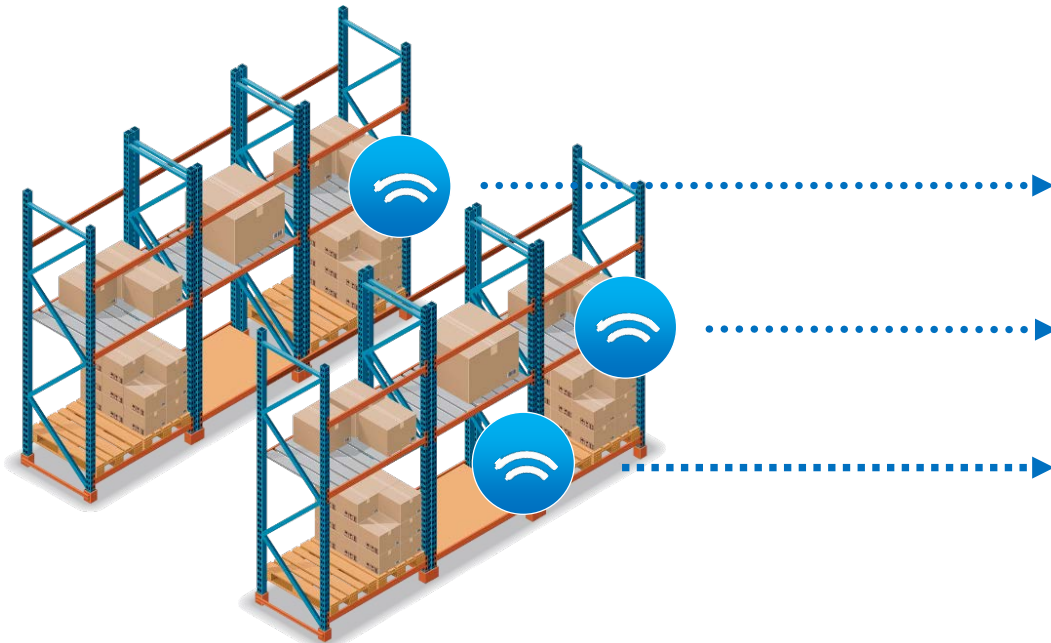
TRANSCEIVER



SOFTWARE

Wireless Network Overview

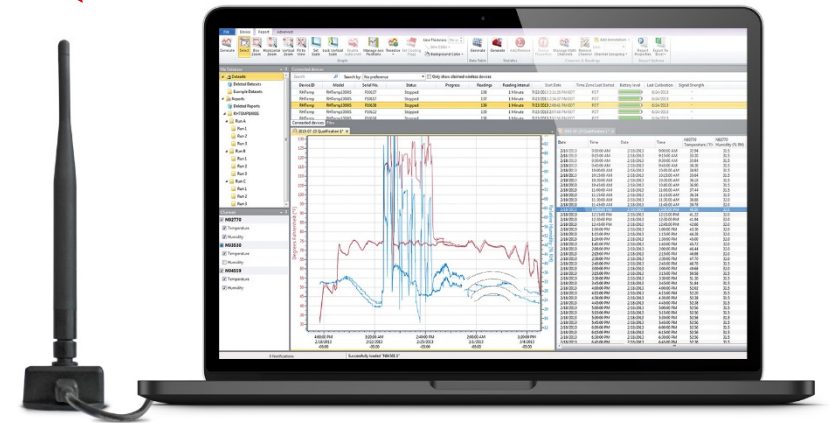
DATA LOGGER COMMUNICATION THROUGHOUT YOUR FACILITY



DATA LOGGERS



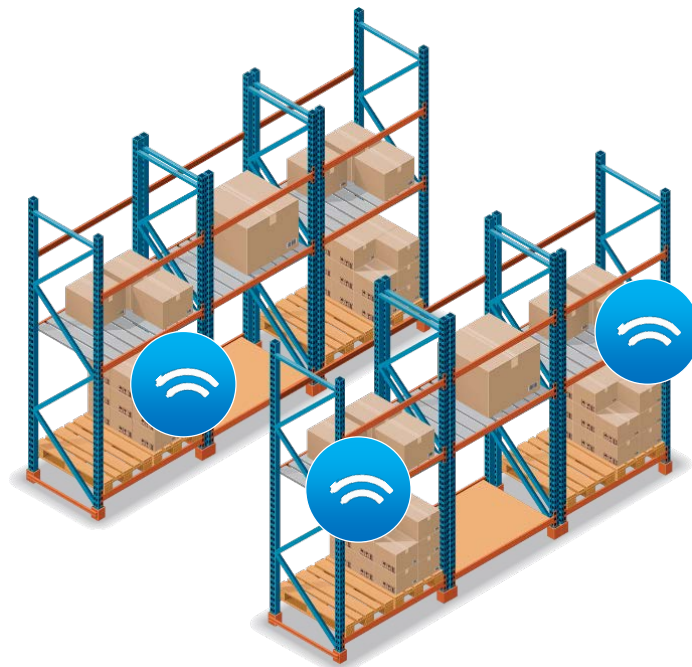
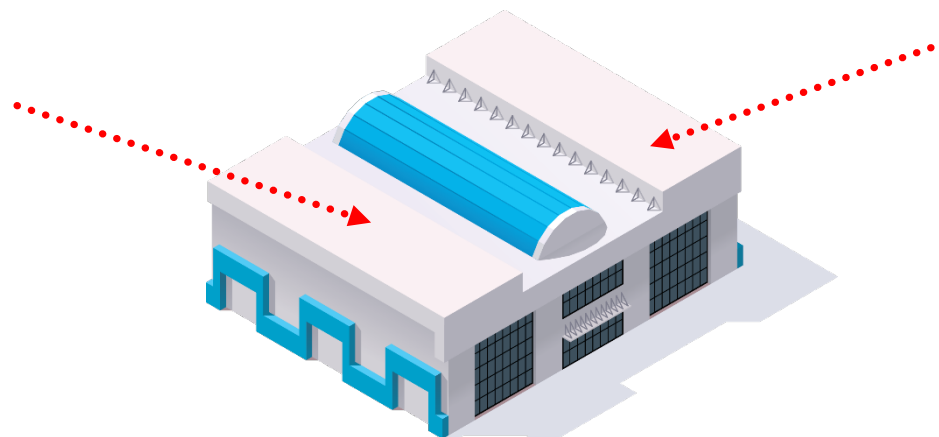
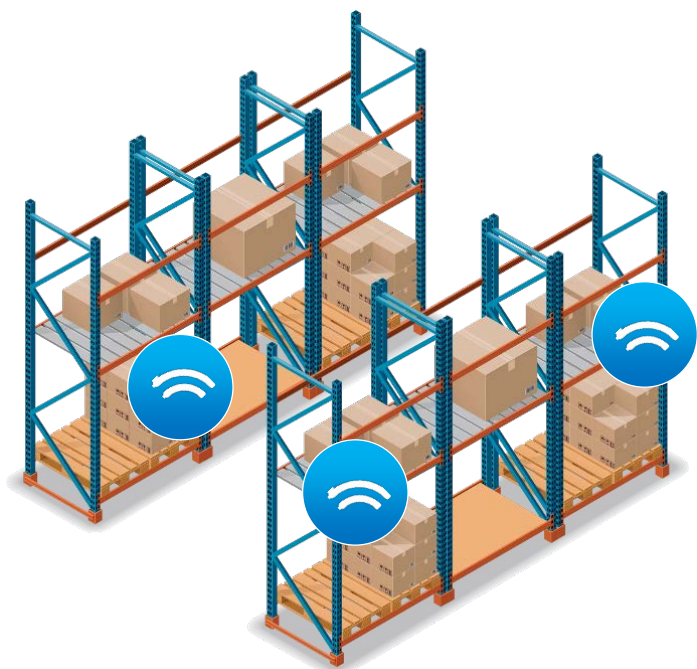
TRANSCEIVERS



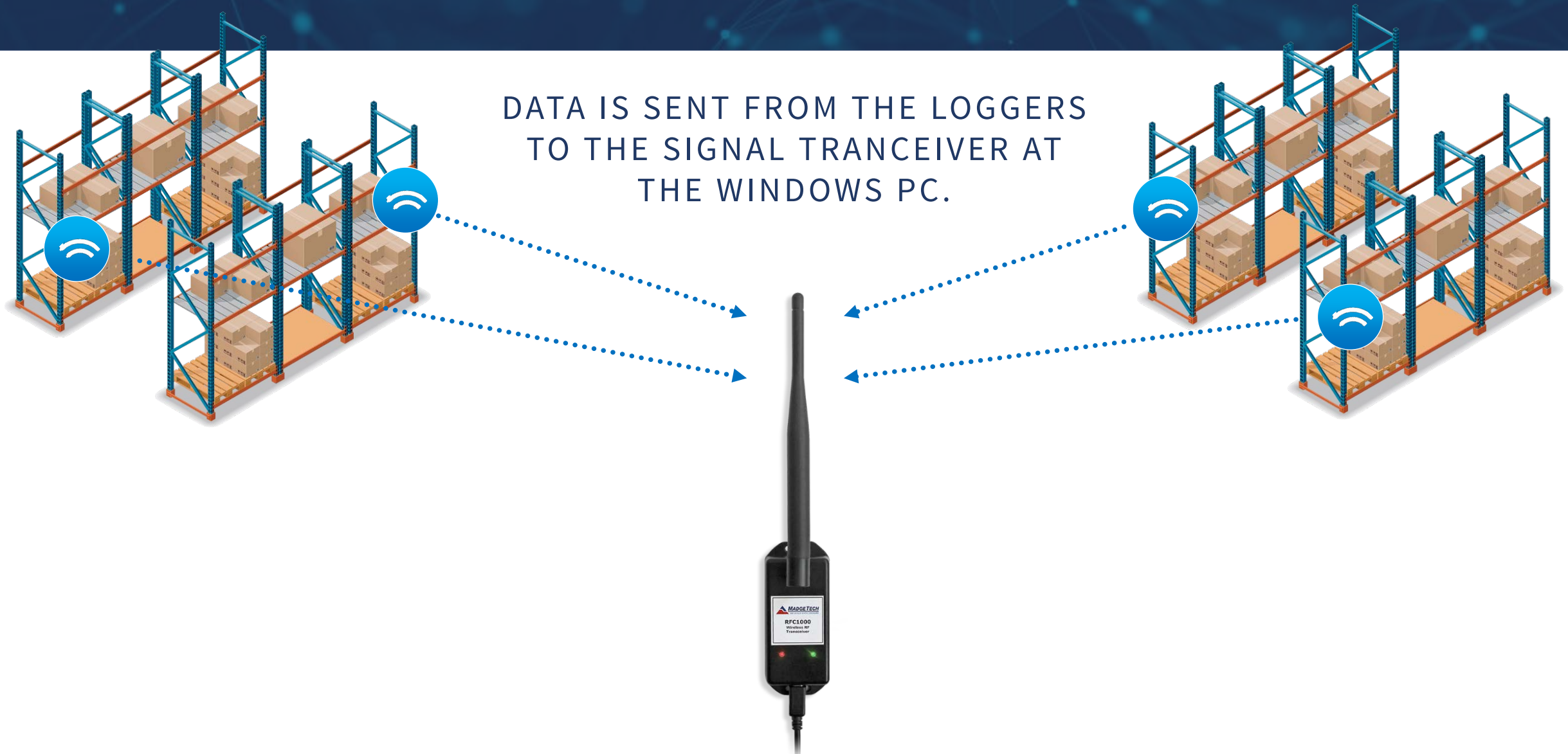
SOFTWARE

Quick & Easy Wireless Setup

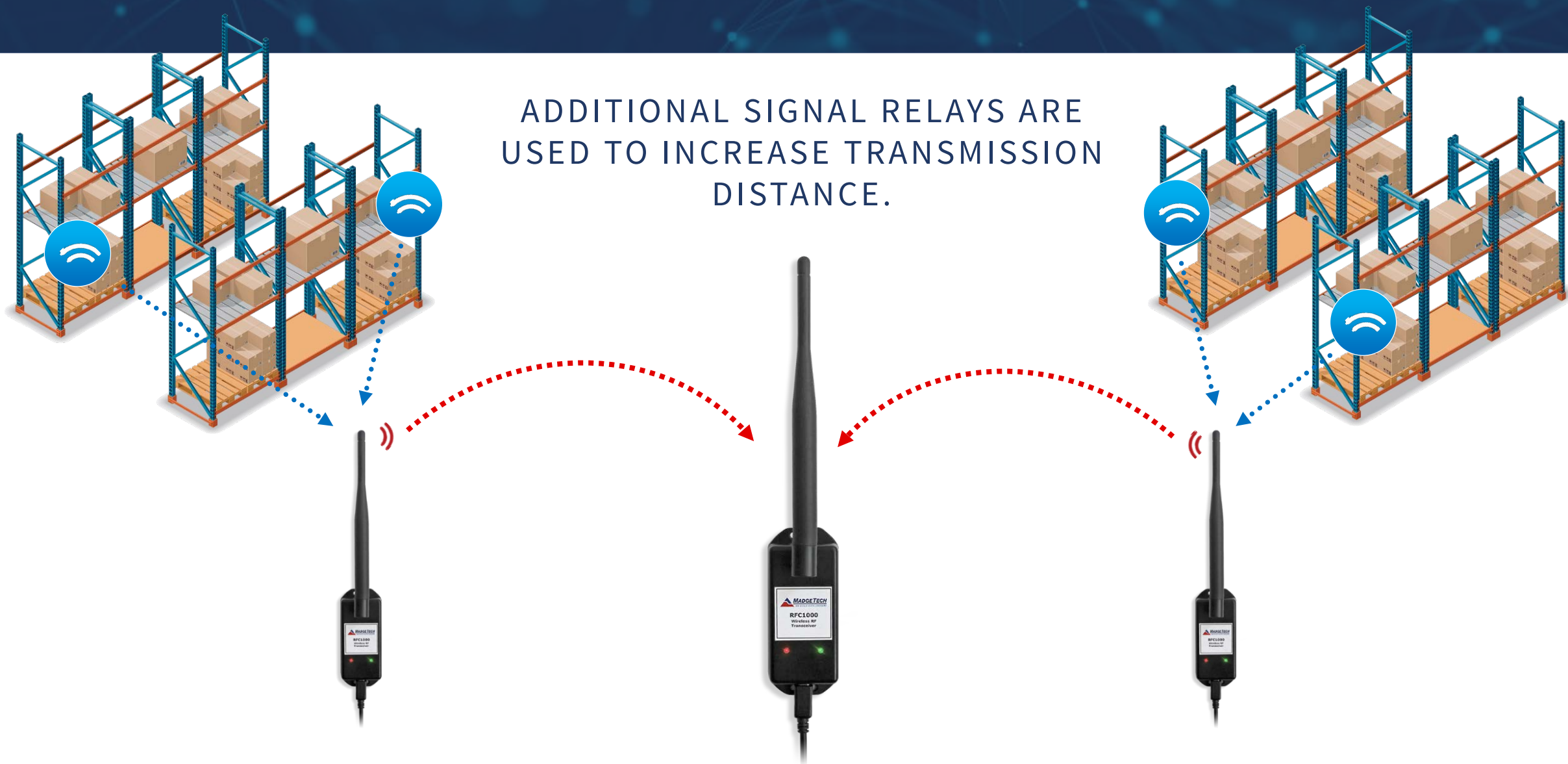
DATA LOGGERS ARE DEPLOYED
THROUGHOUT THE FACILITY.



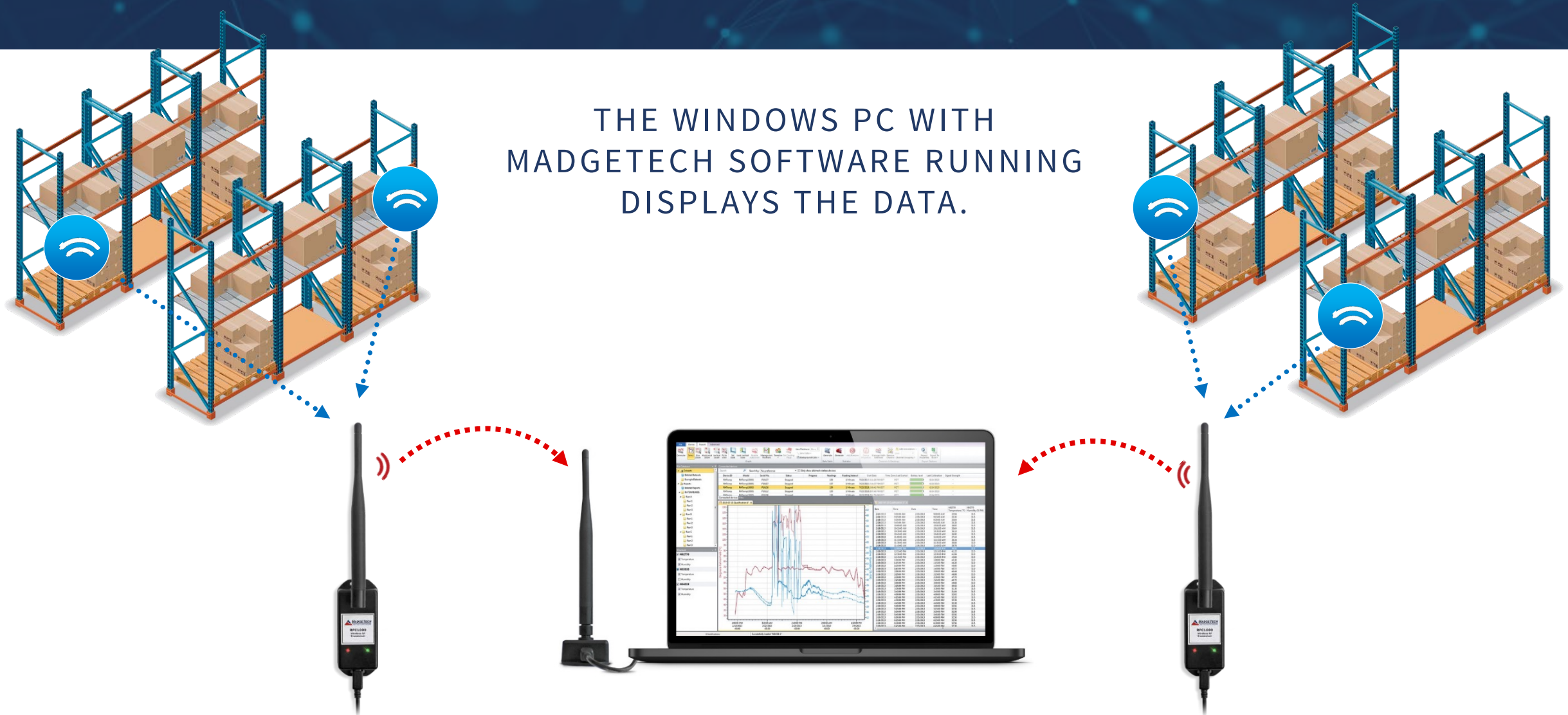
Quick & Easy Wireless Setup



Quick & Easy Wireless Setup

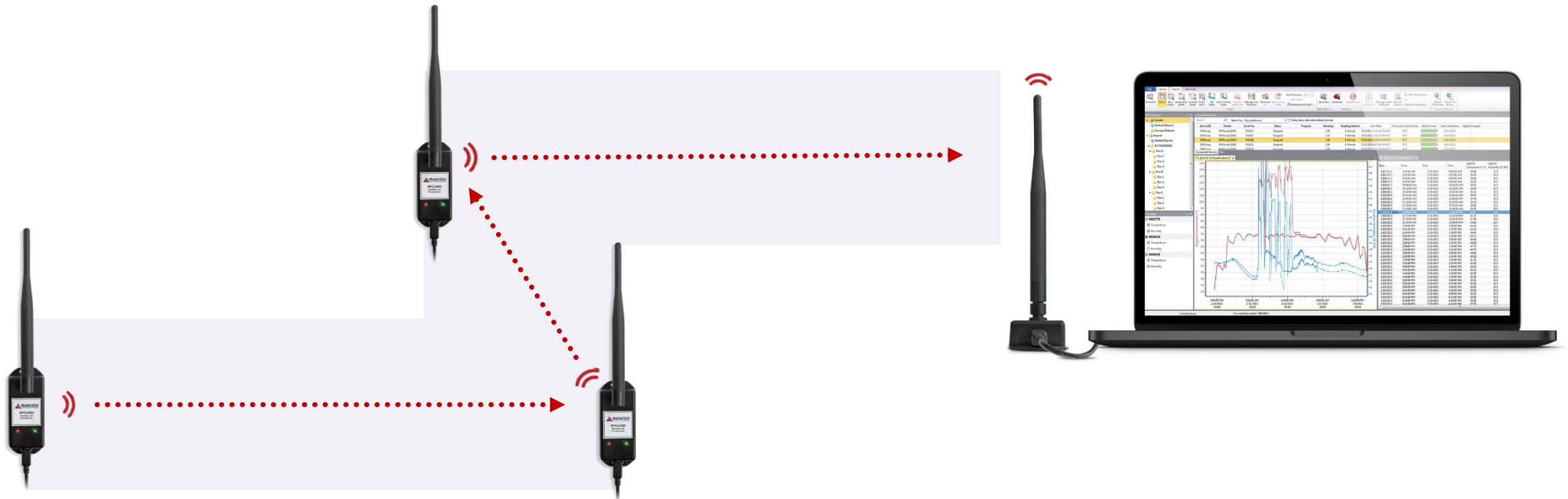


Quick & Easy Wireless Setup



Avoiding Wireless Interference

SIGNAL RELAYS ARE USED TO OVERCOME OBSTACLES OR OBSTRUCTIONS
UNITS ARE SIMPLY PLUGGED INTO ELECTRICAL OUTLETS IN THE DESIRED LOCATIONS



The image features a dark blue horizontal band across the middle of a white background. The band contains a network diagram on the left side, consisting of several blue dots connected by thin, light blue lines, suggesting a data network or connectivity. The text "Wireless Data Loggers" is centered within this band in a white, sans-serif font.

Wireless Data Loggers

2000A Series

WIRELESS DATA LOGGERS

Ideal for real-time, continuous monitoring and offer configurable alarm notifications.

Data is transmitted in real-time to a central PC, or directly to the MadgeTech Cloud.

- Ambient Temperature
- Remote Temperature
- Humidity
- Pressure
- Voltage
- Pulse
- Current
- Carbon Dioxide



2000A Series

WIRELESS DATA LOGGERS



RFTemp2000A
Ambient
Temperature



RFRHTemp2000A
Humidity &
Temperature



RFPRHTemp2000A
Pressure, Humidity
& Temperature



RFTCTemp2000A
Thermocouple



RFRTDTemp2000A
Precision RTD



RFVolt2000A
Voltage



RFPulse2000A
Pulse



RFCurrent2000A
DC Current



RFCO2RHTemp2000A
CO₂, Humidity &
Temperature



VTMS
Vaccine Temperature
Monitoring System



Element HT
Humidity &
Temperature



Element CO₂
CO₂, Humidity &
Temperature

2000A Series Features

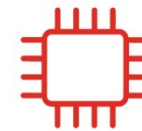
WIRELESS DATA LOGGERS



View Data in
Real-Time



Wireless
Communication



32,256
Readings



Audible & LED
Alarm Indicators



External Power
Supply



LCD
Screen



Text & Email Alarm
Notifications



Wireless Meat Temperature Data Logger

- Complete Meat Process Monitoring (Cooking, Cooling & Storage)
- Equipped with a Rugged Piercing Probe
- Operating Environment: -20 °C to +100 °C (-4 °F to 212 °F)
- Splash-Proof (IP67)

An abstract graphic on the left side of the slide, featuring a network of interconnected nodes and lines in a light blue color, set against a dark blue background.

Wireless Transceivers

RFC1000

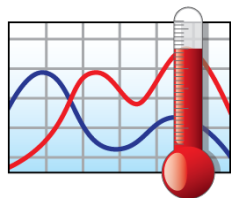
WIRELESS TRANSCEIVERS

Wireless Transceiver

- Long transmission range, for better performance in occluded environments such as ovens & refrigerators.
- External antenna allows flexibility with mounting positions in both orientation & proximity to obstructions.
- CE Approved
- Splash-Proof

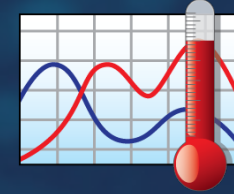


MadgeTech Software



Data Logger Software

MADGETECH 4 SOFTWARE

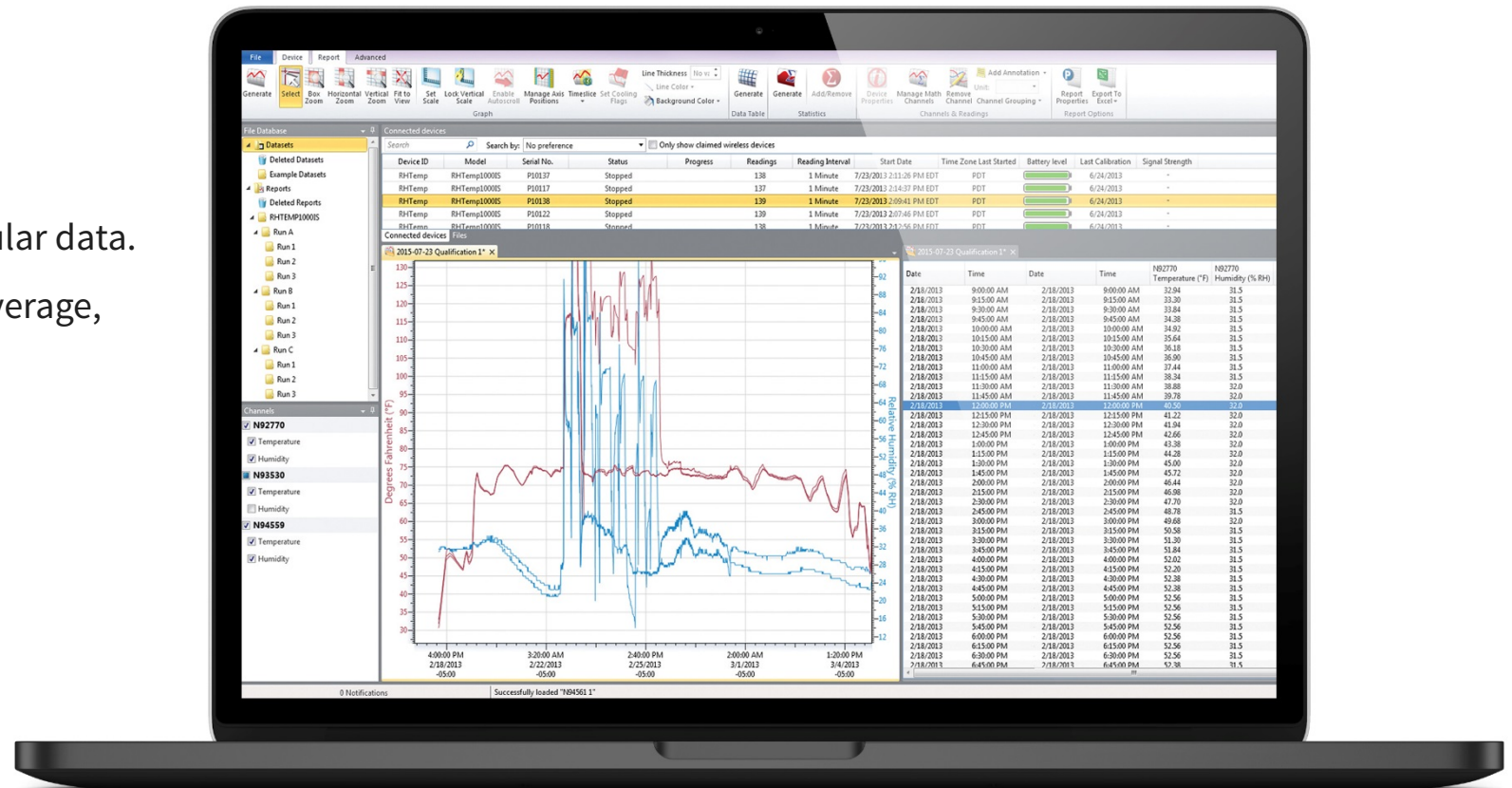


Powerful Data Analysis

- Customizable Reports
 - Graph, Tabular Data & Reports
- Annotate data points on the graph or tabular data.
- Statistics include minimum, maximum, average, time above temperature & more.

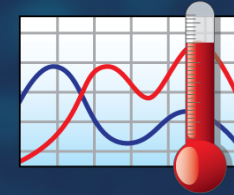
User Friendly

- Immediate device status information
- Digital calibration
- Automatic data saving
- Export to Excel

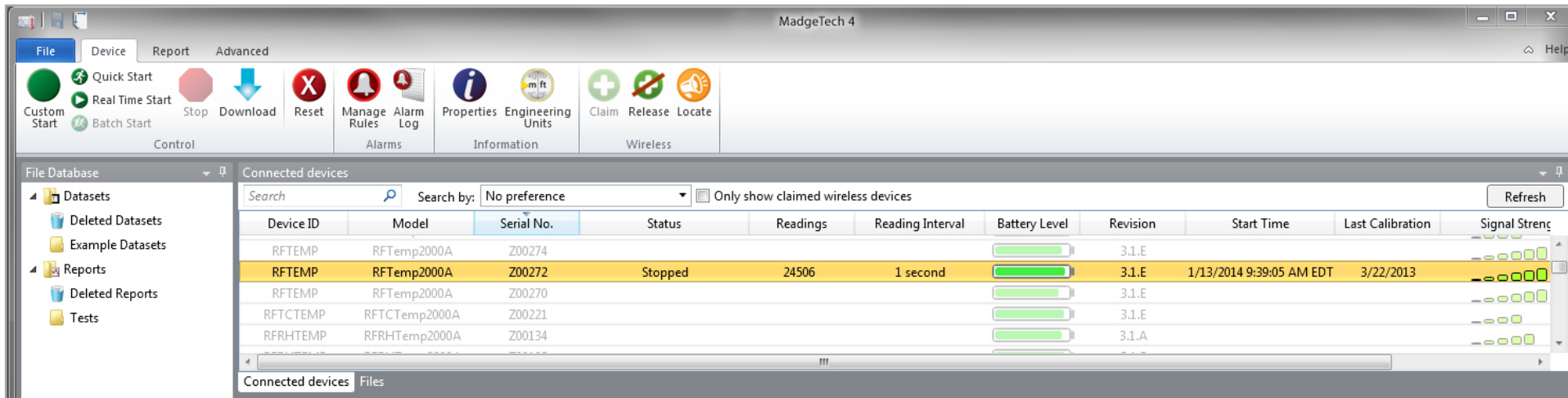


Getting Started

MADGETECH 4 SOFTWARE

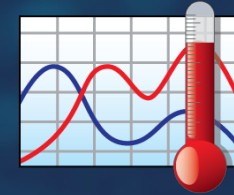


- All wireless loggers within range will be identified and displayed in the **Connected Devices** panel.
- Device information is displayed including **Device ID**, **Serial Number**, **Last Calibration Date** and **Battery Level**.
- Multiple devices can be connected, configured and operated simultaneously.



Communication

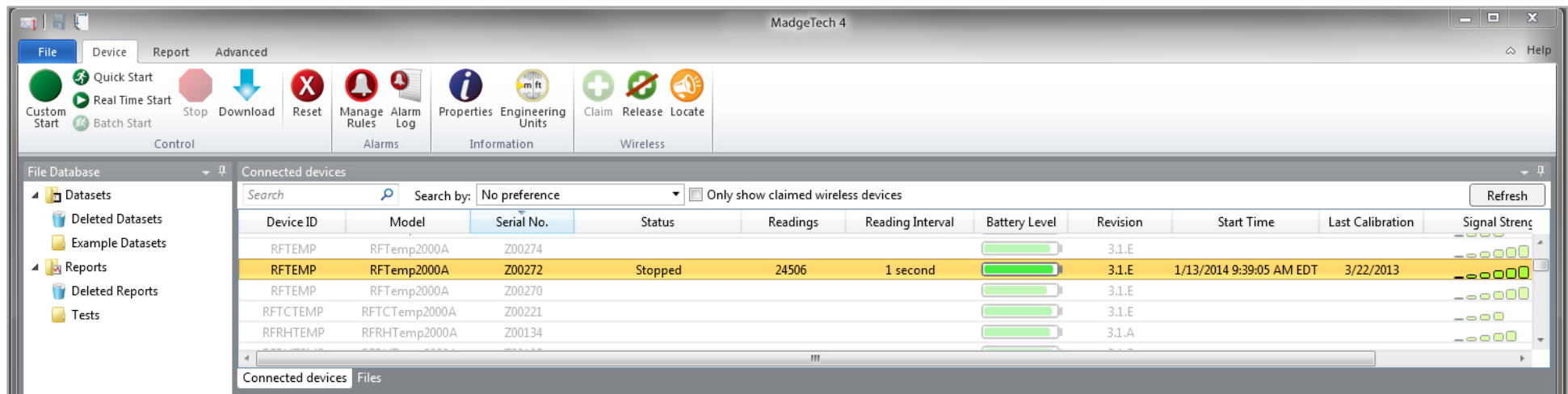
MADGETECH 4 SOFTWARE



- To communicate and configure a wireless data logger, highlight the device within the **Connected Devices** panel and then click the **Claim** icon.
- Once a data logger is claimed, additional device information and configuration options are available.

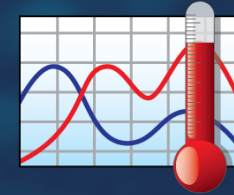


Claim

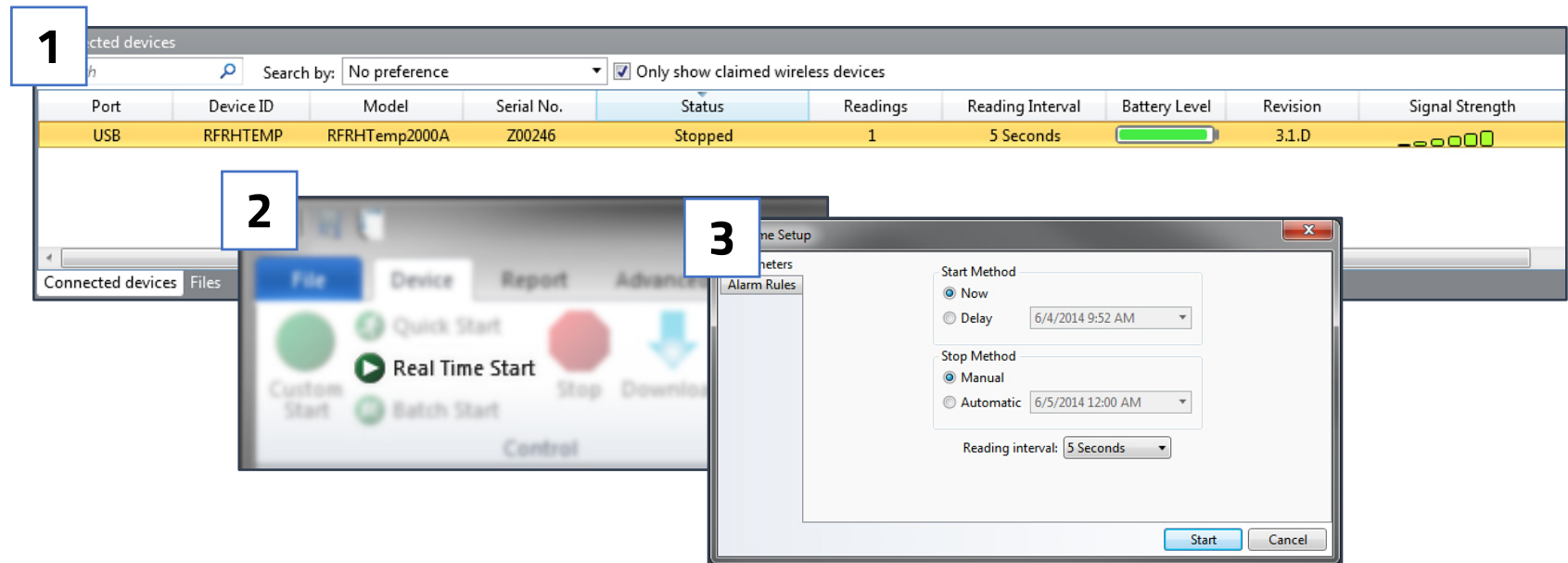


Start in Real-Time

MADGETECH 4 SOFTWARE

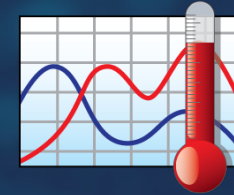


1. Select the device within the **Connected Devices** panel.
2. Select **Real-Time Start** from the Control tab in the top menu bar.
3. Choose your parameters for reading rate, immediate or delay start.



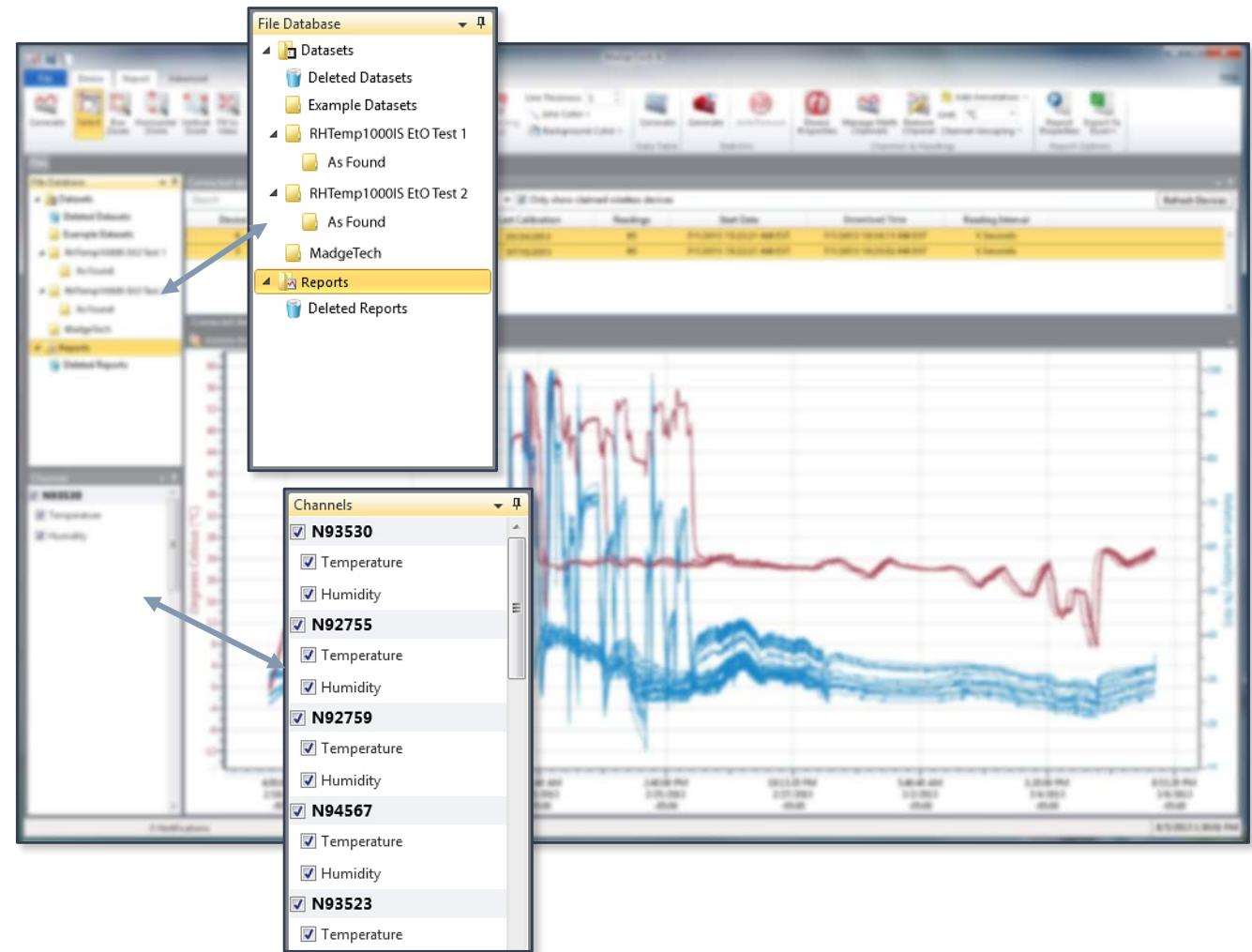
Data Analysis

MADGETECH 4 SOFTWARE



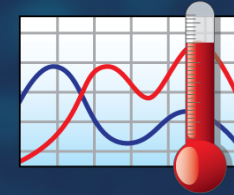
Data Handling & File Database

- As data is transmitted, it is saved to the built-in file database.
- Downloaded data is saved in the Datasets folder.
- When in Real-Time mode, a graph can automatically be generated and displayed.
- Customized graphs and compiled data can be saved to the Reports Folder.
- The look and feel is comparable to standard office software to aid in user friendliness and ease of use.

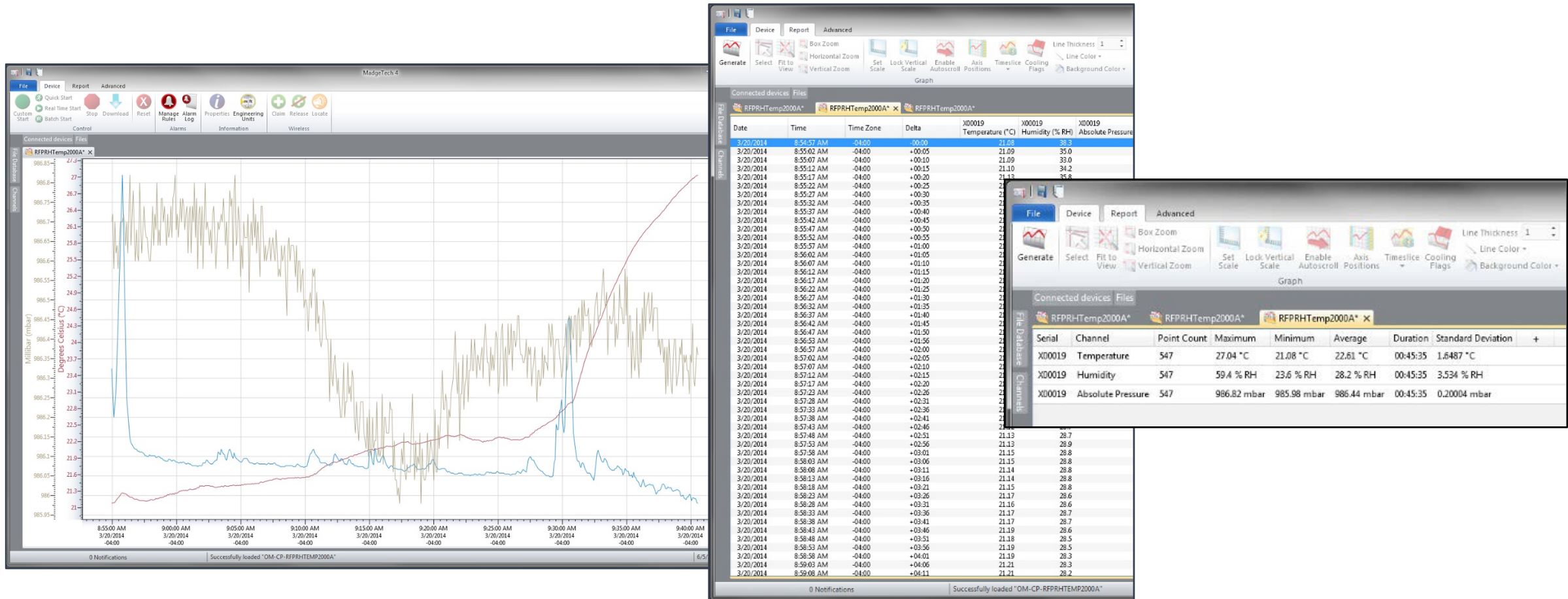


Data Analysis

MADGETECH 4 SOFTWARE

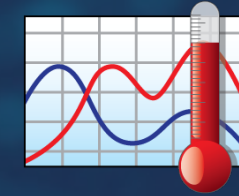


Graphs, Statistics & Tabular Data



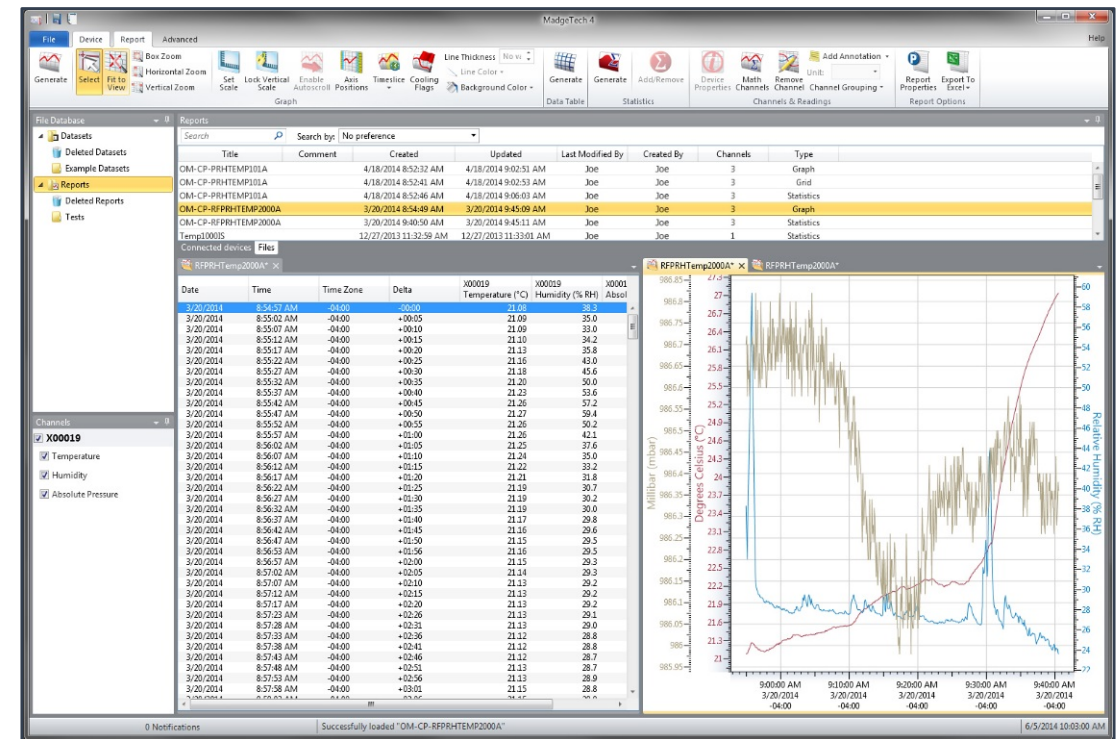
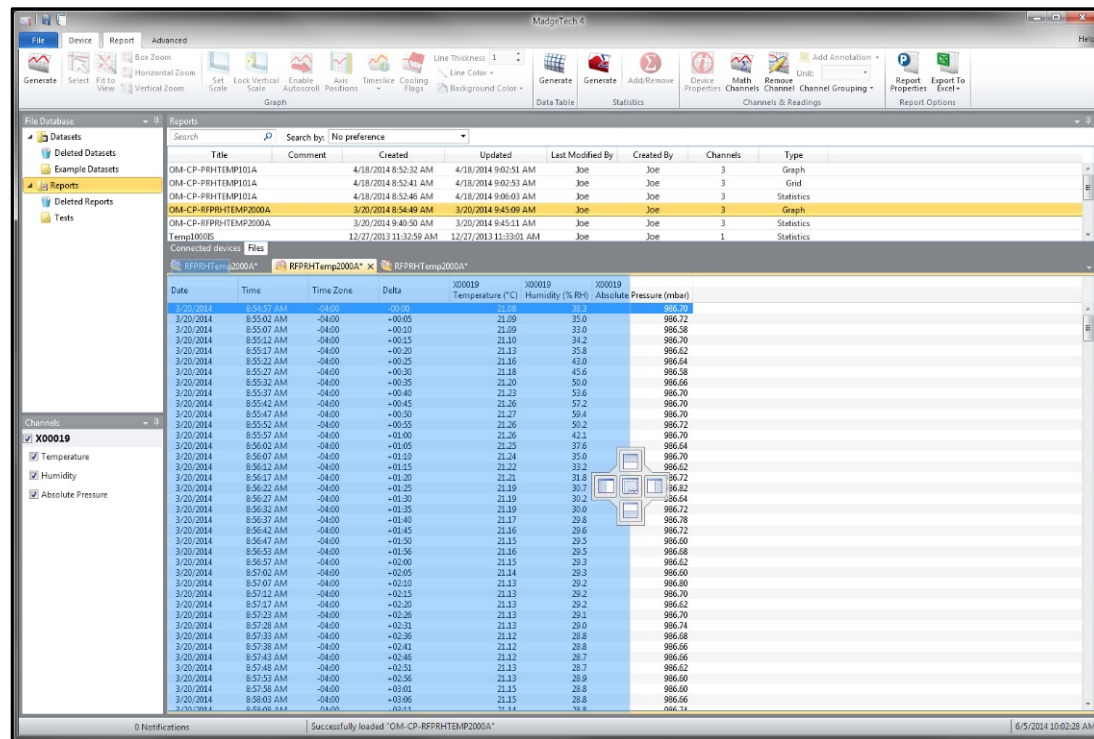
Data Analysis

MADGETECH 4 SOFTWARE



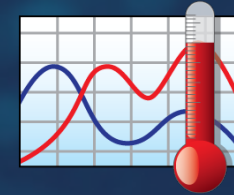
Customizable Interface

To increase efficiency, the MadgeTech software allows users to customize the layout of the screen multiple ways to better suit their needs.



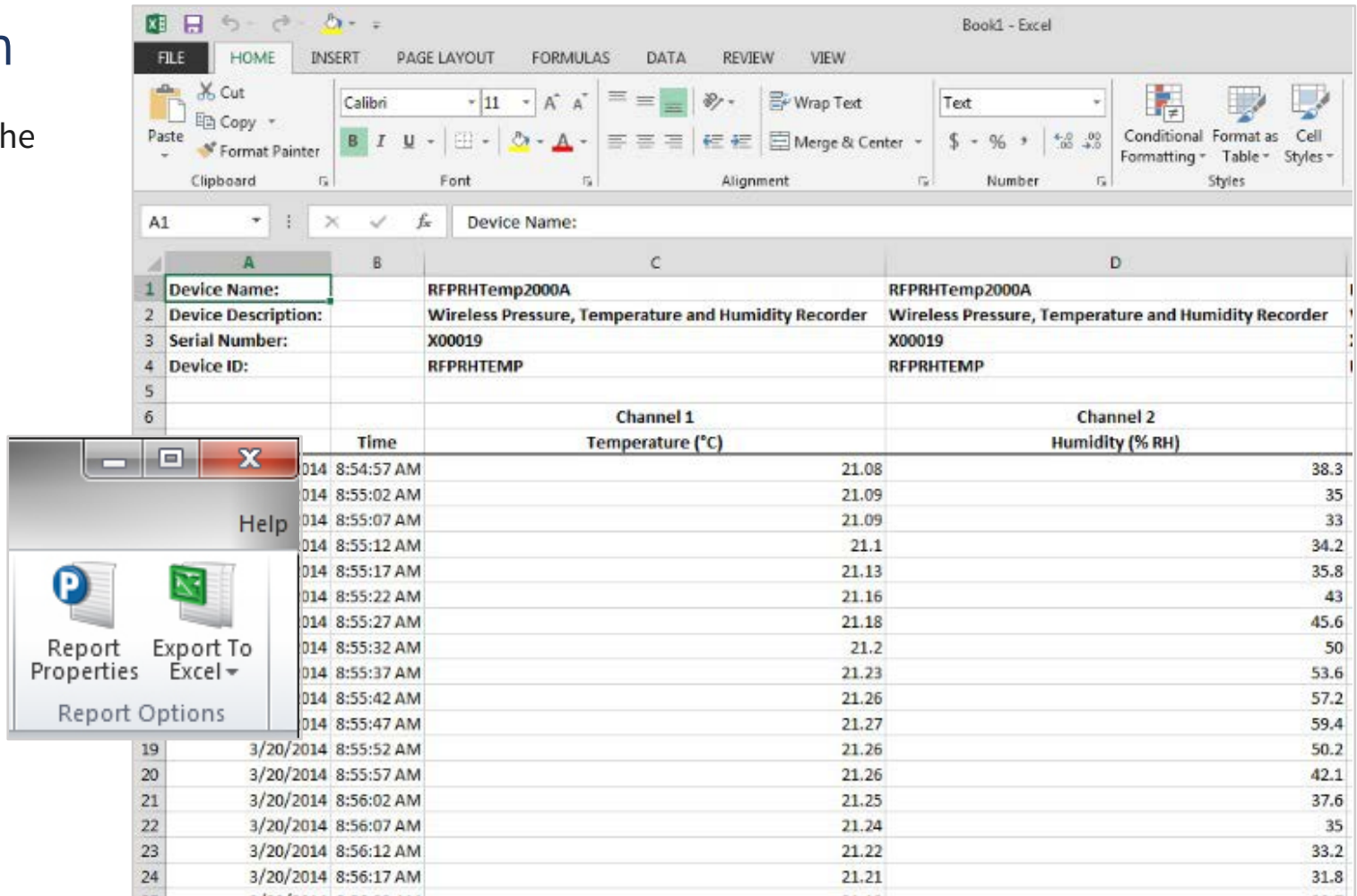
Export to Excel

MADGETECH 4 SOFTWARE



Export With the Click of a Button

MadgeTech Software makes data review easy with the ability to export to Microsoft Excel.



The screenshot shows a Microsoft Excel window with a data table. A context menu is open over the table, showing options: Report Properties, Export To Excel, and Report Options. The data table has columns for Time, Channel 1 Temperature (°C), and Channel 2 Humidity (% RH). The data is organized into two sections: one for 'RFPRHTemp2000A' and another for '3/20/2014'.

	A	B	C	D
1	Device Name:	RFPRHTemp2000A	RFPRHTemp2000A	
2	Device Description:	Wireless Pressure, Temperature and Humidity Recorder	Wireless Pressure, Temperature and Humidity Recorder	
3	Serial Number:	X00019	X00019	
4	Device ID:	RFPRHTEMP	RFPRHTEMP	
5				
6				
		Time	Channel 1 Temperature (°C)	Channel 2 Humidity (% RH)
14	8:54:57 AM		21.08	38.3
15	8:55:02 AM		21.09	35
16	8:55:07 AM		21.09	33
17	8:55:12 AM		21.1	34.2
18	8:55:17 AM		21.13	35.8
19	8:55:22 AM		21.16	43
20	8:55:27 AM		21.18	45.6
21	8:55:32 AM		21.2	50
22	8:55:37 AM		21.23	53.6
23	8:55:42 AM		21.26	57.2
24	8:55:47 AM		21.27	59.4
19	3/20/2014 8:55:52 AM		21.26	50.2
20	3/20/2014 8:55:57 AM		21.26	42.1
21	3/20/2014 8:56:02 AM		21.25	37.6
22	3/20/2014 8:56:07 AM		21.24	35
23	3/20/2014 8:56:12 AM		21.22	33.2
24	3/20/2014 8:56:17 AM		21.21	31.8

Secure Software

MADGETECH 4 SECURE SOFTWARE



Aiding in 21 CFR Part 11 Compliance

MadgeTech 4 Secure Software aids customers in compliance with 21 CFR Part 11 requirements. The software ensures standards in which electronic files are considered equivalent to paper records, saving time and effort.

- MadgeTech 4 Secure Software Package
- IQ/OQ/PQ Protocols
- Software Validation Workbook



Secure Software

MADGETECH 4 SECURE SOFTWARE



Aids in Compliance with FDA 21 CFR Part 11/820 and GxP Guidelines

Additional security benefits such as:



Audit Trails



Secure Data Files



Administrative Privileges



Electronic Signatures

MadgeTech Cloud Services



Features

MADGETECH CLOUD SERVICES

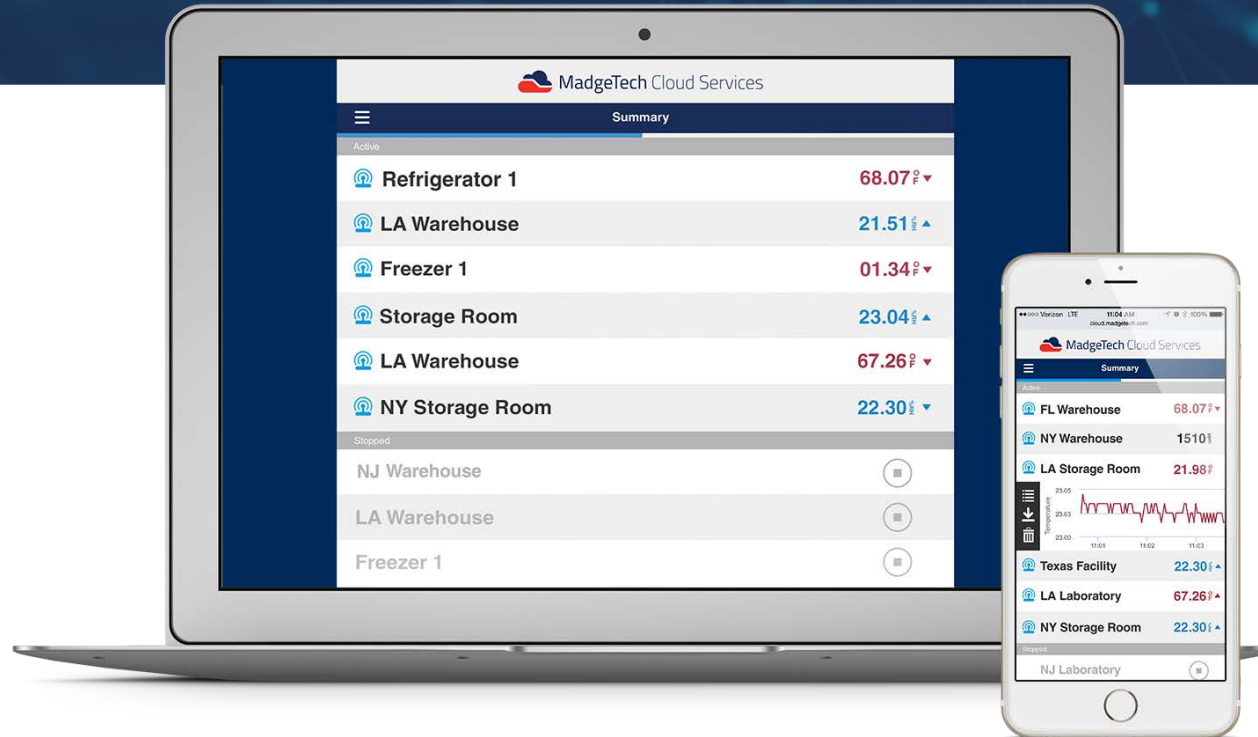


With MadgeTech Cloud Services, a wireless data logger system can securely transmit data in real-time to be viewed on any internet or data enabled device such as a computer, tablet or mobile device.



Features

MADGETECH CLOUD SERVICES



View Data in
Real-Time



Access Data
Instantly



Secure
Solution



Email & Text
Notifications



Quick & Easy
Setup

RFC1000 Cloud Relay

MADGETECH CLOUD SERVICES



Wireless Data Logging Hub

- Transmits data directly to the cloud, eliminating the need for a Central PC.
- Real-time data can be viewed from any internet enabled device.

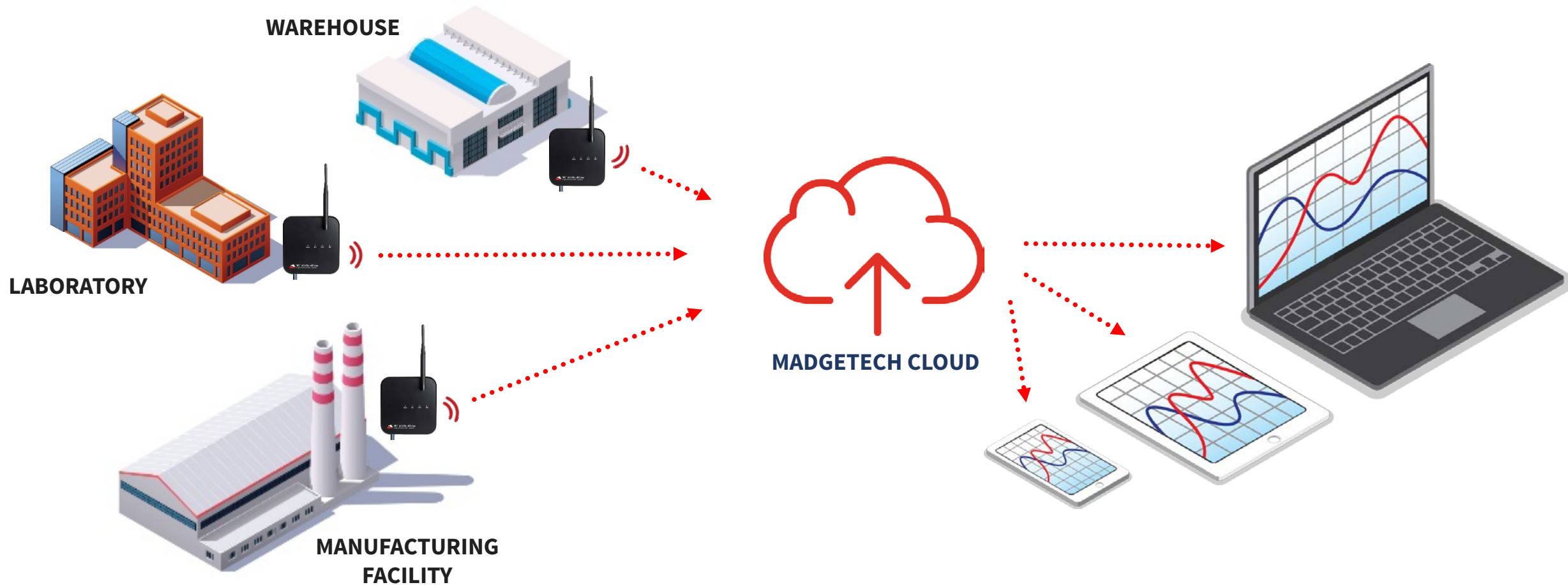
RFC1000 Cloud Relay

MADGETECH CLOUD SERVICES



RFC1000 Cloud Relay

MADGETECH CLOUD SERVICES



MadgeTech Customer Support



WessexPower

Solutions for High-tech Instrumentation

www.wessexpower.co.uk



 E-commerce Instrumentation

www.loggershop.co.uk

Telephone: +44 (0) 1929 459 459 | Email: Sales@WPLS.co.uk